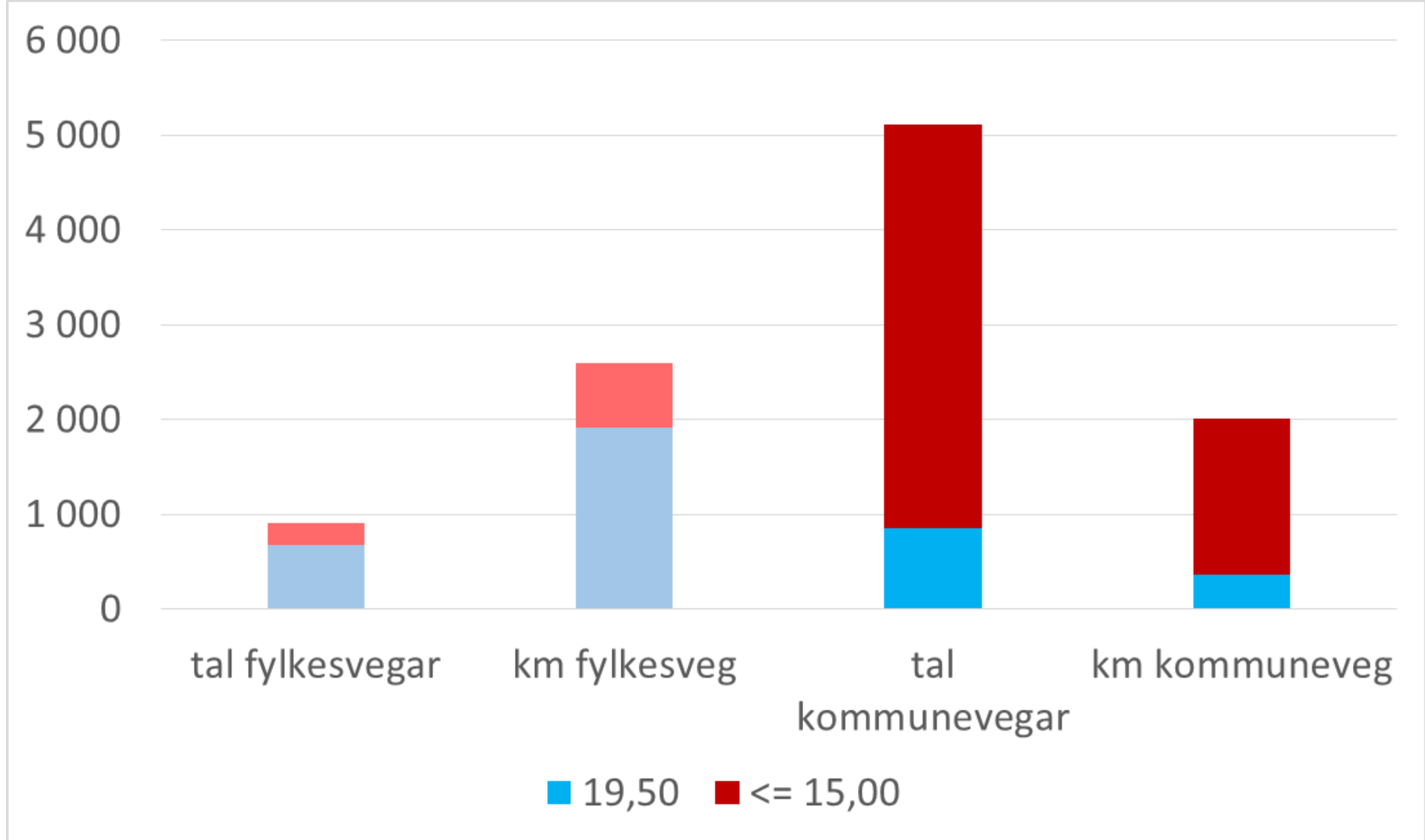
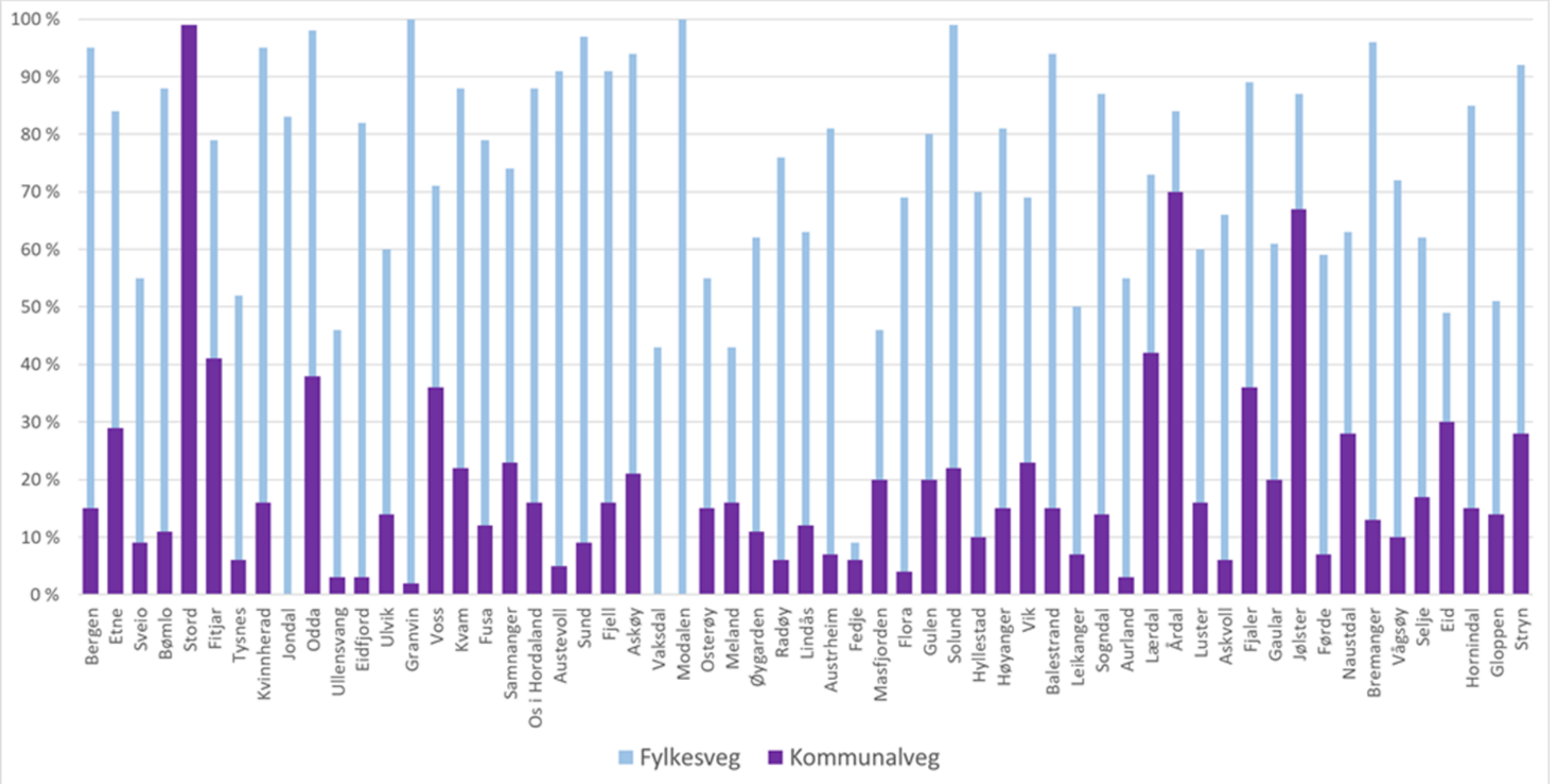
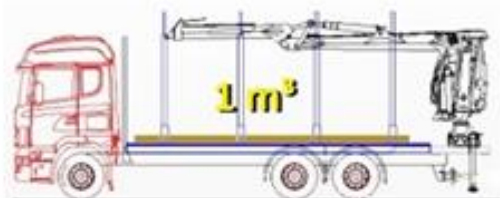


Prioritering av flaskehalsar for
tømmertransport på kommunalt vegnett i
Sogn og Fjordane







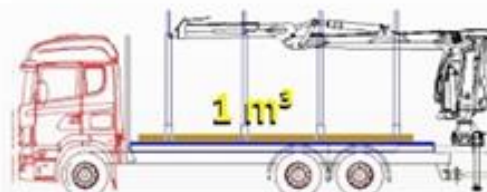
6t

9t

12,4 m
31

BK 6/28

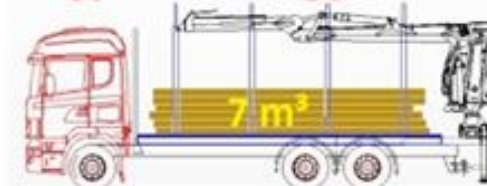
19,5 m
3,4



6t

9t

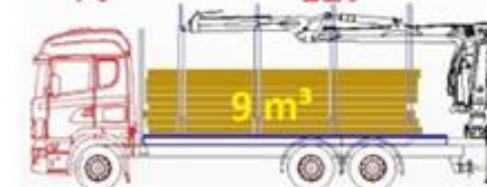
9 m³



7t

12t

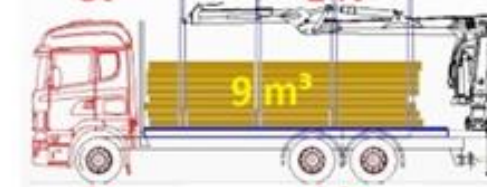
9 m³



8t

14t

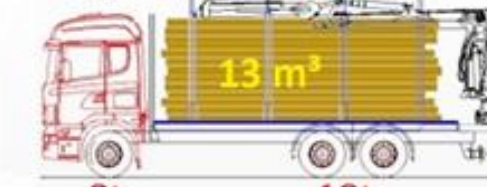
13 m³



8t

14t

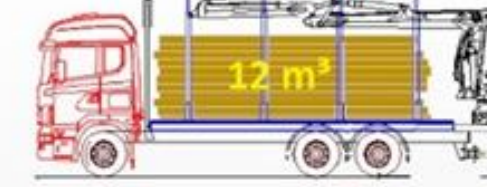
17 m³



8t

18t

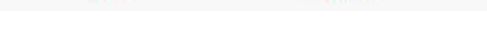
19 m³



8t

17t

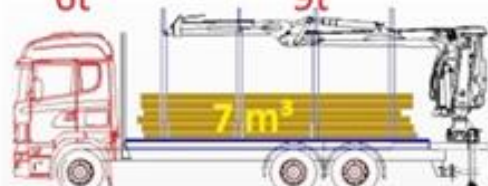
30 m³



8t

18t

16t



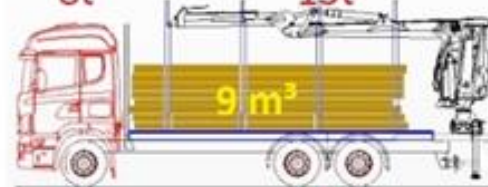
8t

13t

12,4 m
5,2

BK 8/32

19,5 m
2,4



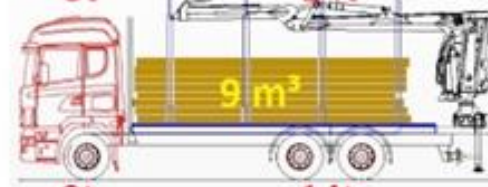
8t

14t

12,4 m
3,9

BK T8/40

19,5 m
1,5



8t

14t

12,4 m
3,9

BK T8/50

19,5 m
1,2



8t

18t

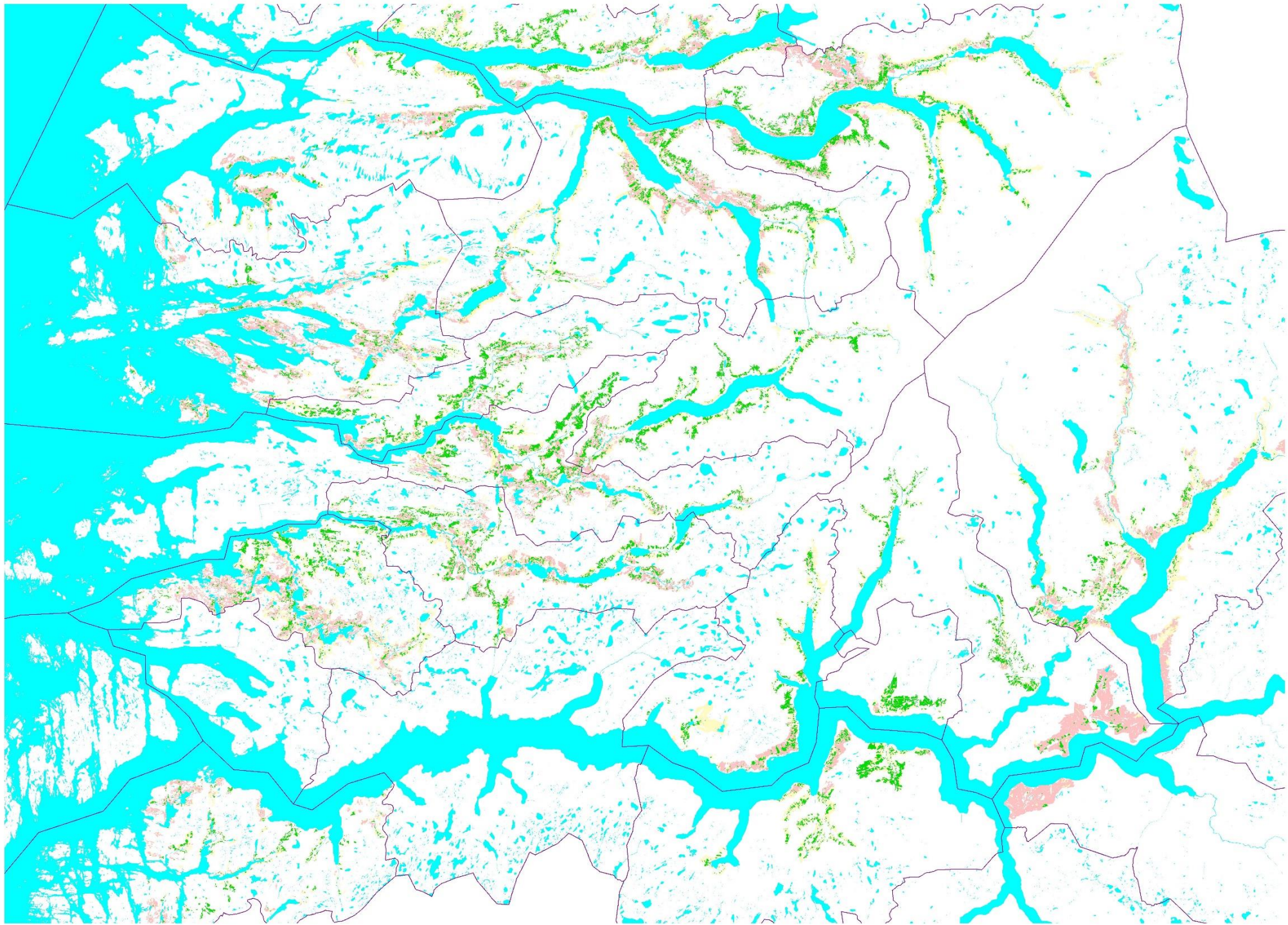
12,4 m
2,6

BK 10/50

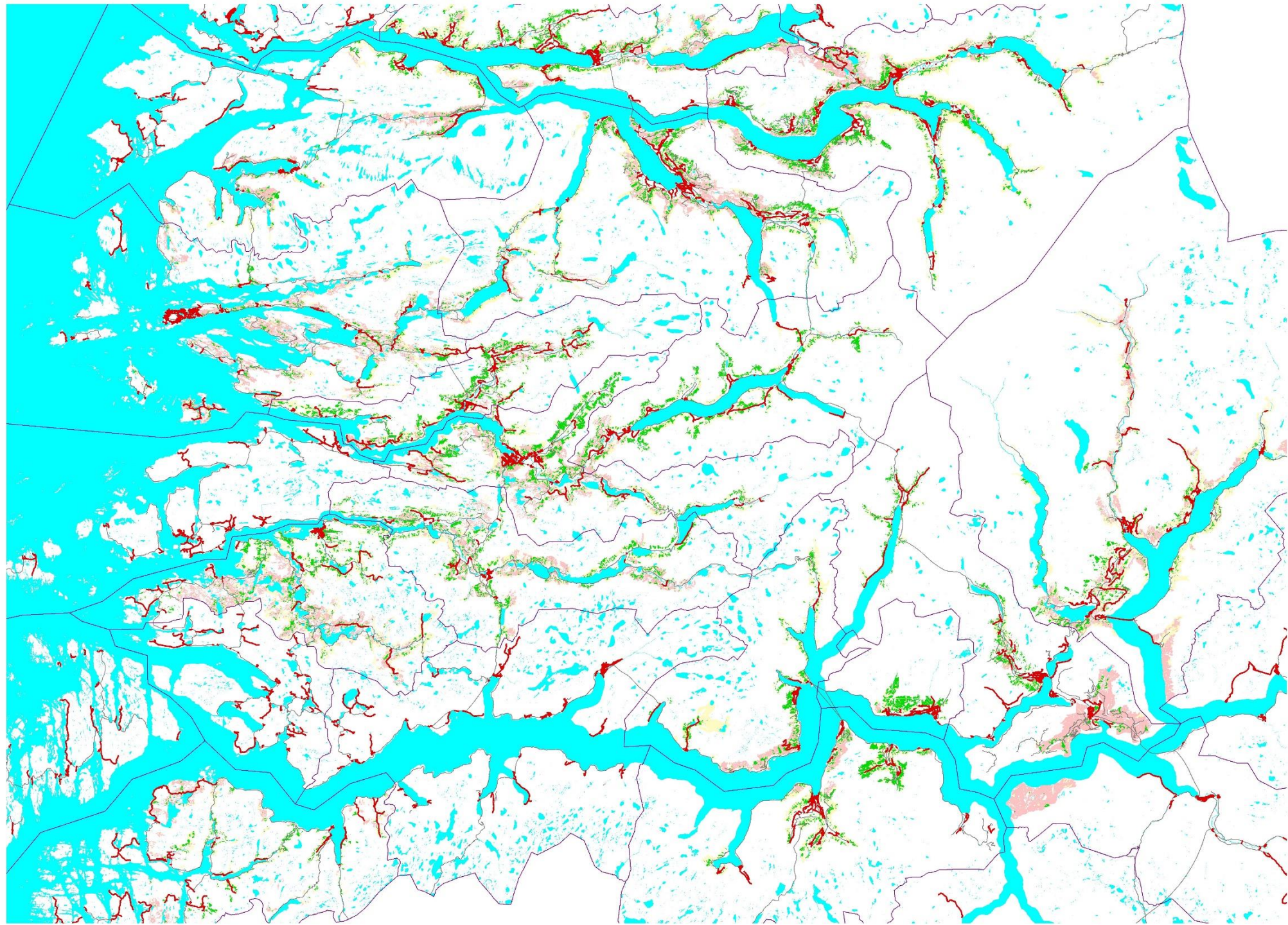
19,5 m
1

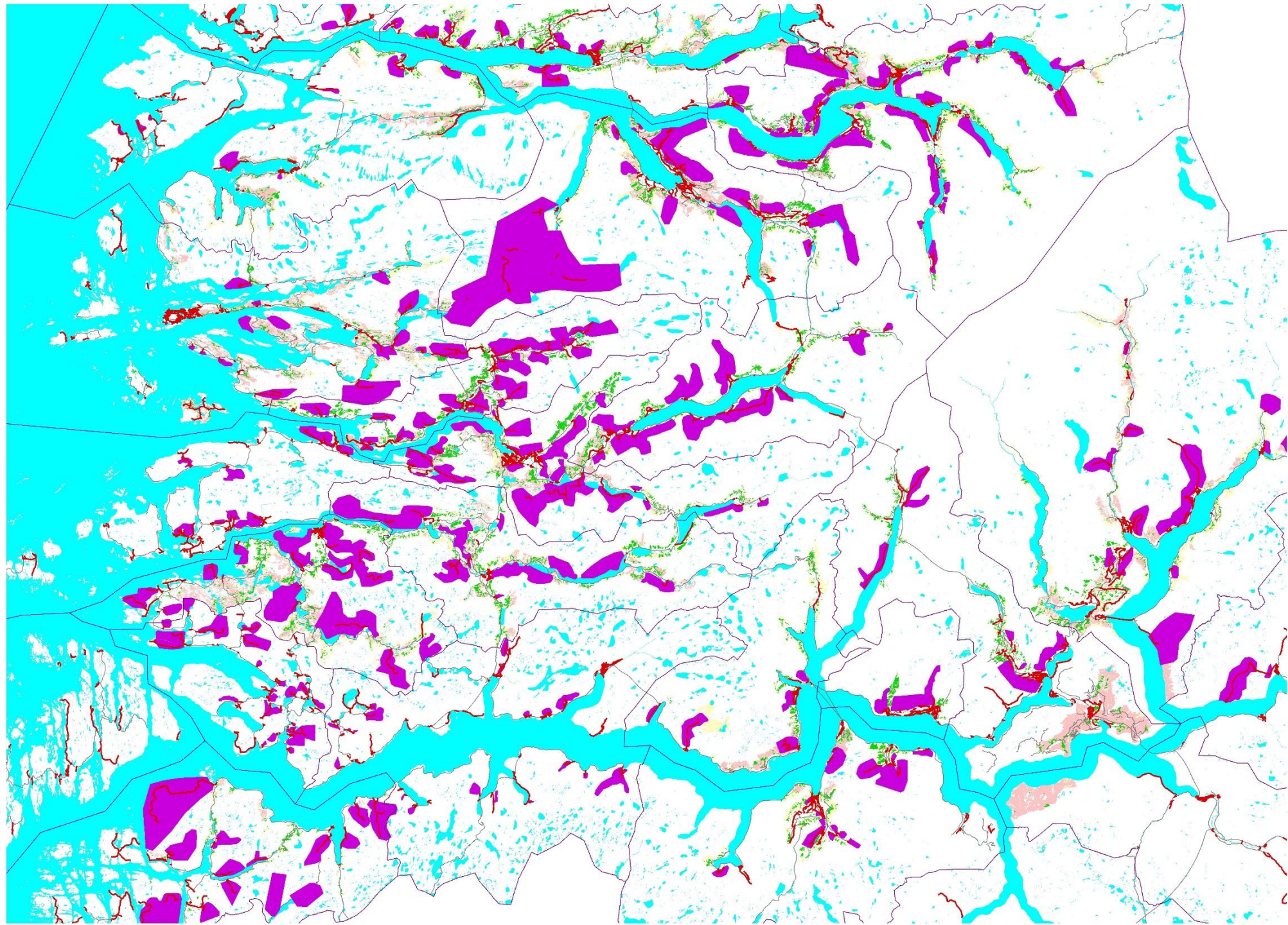
BK 10/60

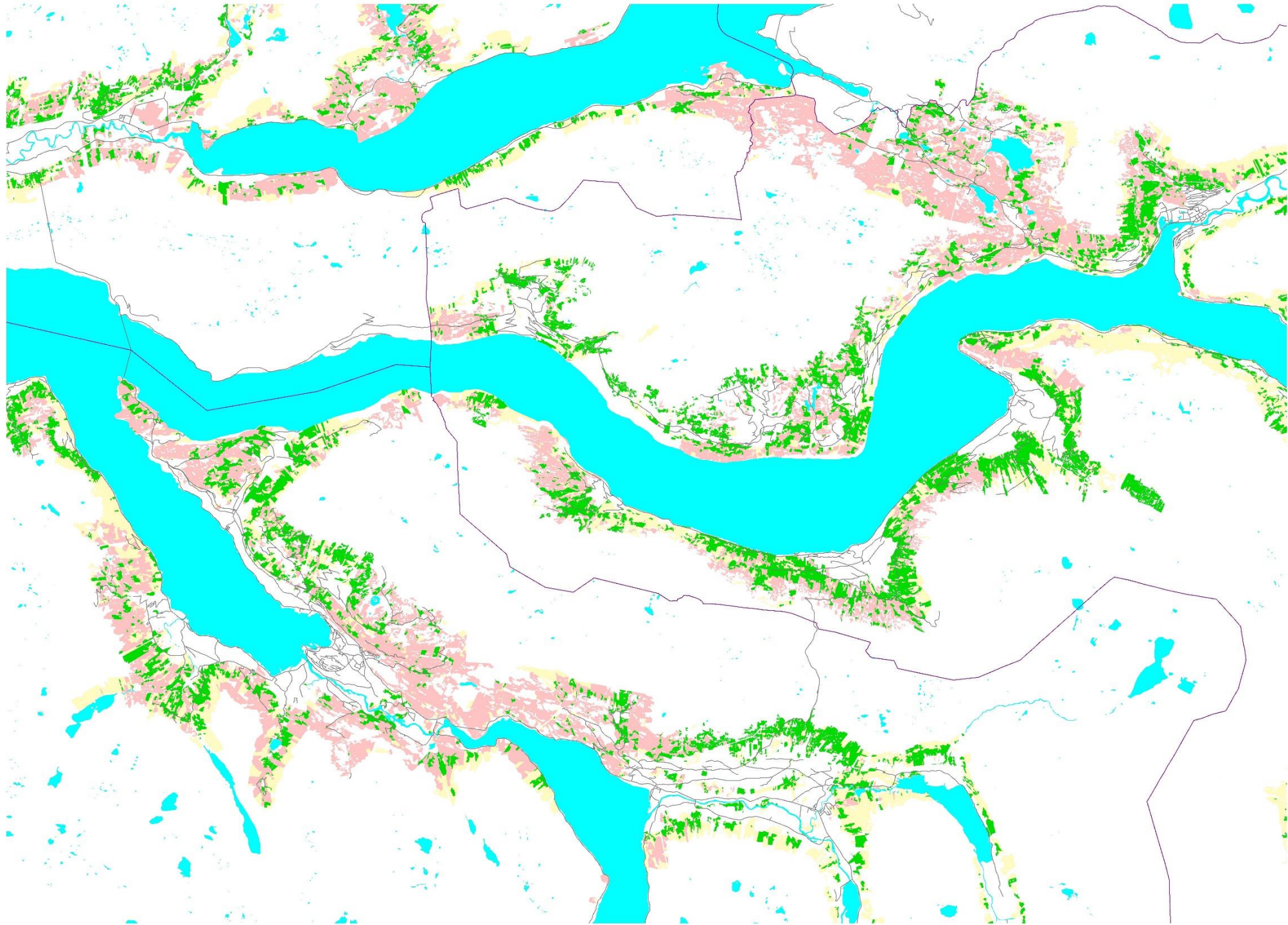
24 m

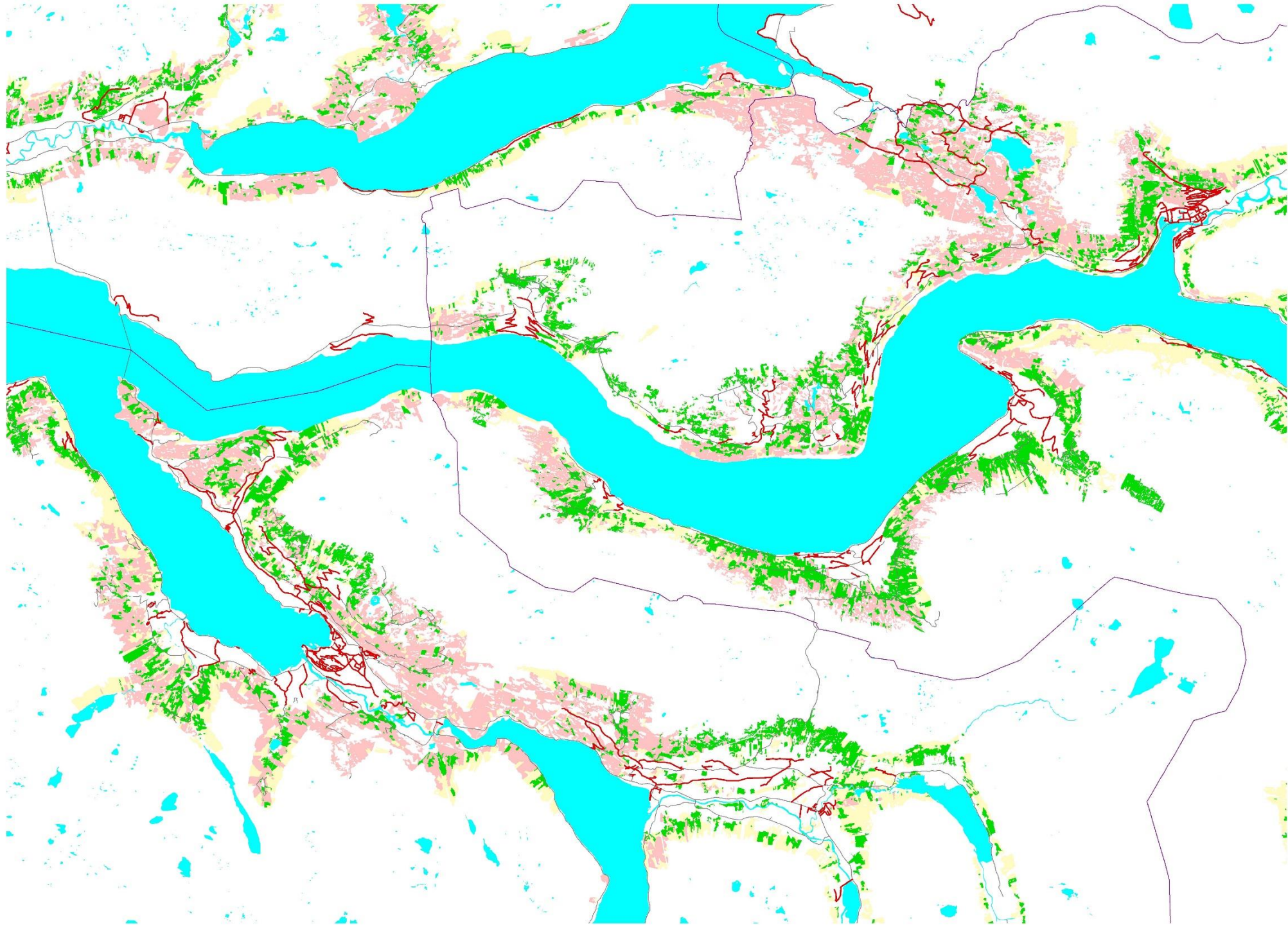


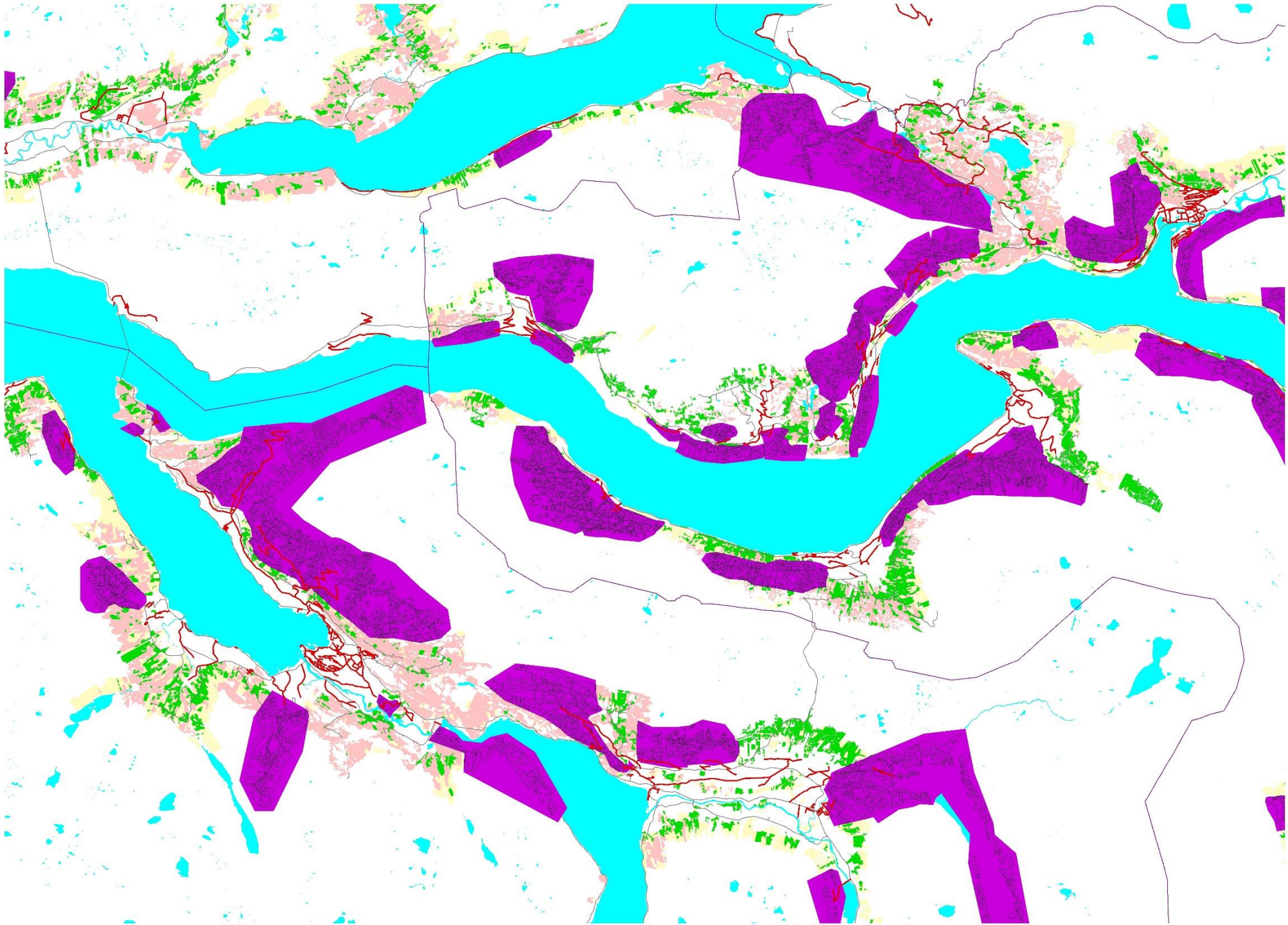












A1 : [X] [✓] [fx] KOBLING1

| | D | E | F | G | H | I | J | K | L | M | N | O | P | Q | R | S | T | U | V | W | X | Y | Z | AA | AB | AC | AD | |
|-------|------------|-------------|-------|------|------|------|-----|-----|-----|-----|------|-----|------|-----|------|------|----------|----------|-------|-------|--------|------|------|-----|-----|------|----------|--|
| 1 | TAKSKUNDEN | TEICBESTAND | AREAL | BEST | MAI | B MA | GRA | FUR | LAU | THM | FODS | HM | VOLH | VOL | VOL2 | VOL | OBJECTID | OBJECTID | VEGNR | COUNT | VEGNR2 | KOMM | Komm | veg | SHA | | | |
| 34988 | 1999 | 97117 | 1 | 8 | 1,5 | 5 | 0 | B | 11 | 0 | 0 | 100 | L | 110 | 1950 | 2060 | 5 | 3 | 5 | 3 | 12903 | 278 | 127 | 1 | 0 | 1449 | 1449-127 | |
| 34989 | 1999 | 97118 | 1 | 1 | 2,0 | 21 | 0 | G | 20 | 100 | 0 | 0 | G | 80 | 1960 | 2040 | 49 | 25 | 40 | 20 | 12367 | 278 | 127 | 1 | 0 | 1449 | 1449-127 | |
| 34990 | 1999 | 97118 | 1 | 10 | 5,4 | 109 | 0 | G | 20 | 100 | 0 | 0 | G | 80 | 1960 | 2040 | 256 | 47 | 207 | 38 | 12626 | 278 | 127 | 1 | 0 | 1449 | 1449-127 | |
| 34991 | 1999 | 97118 | 1 | 11 | 2,8 | 0 | 0 | G | 17 | 0 | 0 | 0 | G | 90 | 1980 | 2070 | 156 | 56 | 50 | 18 | 12704 | 278 | 127 | 1 | 0 | 1449 | 1449-127 | |
| 34992 | 1999 | 97118 | 1 | 12 | 6,6 | 0 | 0 | G | 17 | 0 | 0 | 0 | G | 90 | 1990 | 2080 | 367 | 56 | 24 | 4 | 12745 | 278 | 127 | 1 | 0 | 1449 | 1449-127 | |
| 34993 | 1999 | 97118 | 1 | 13 | 2,2 | 57 | 0 | G | 17 | 100 | 0 | 0 | G | 90 | 1950 | 2040 | 102 | 46 | 87 | 40 | 12675 | 278 | 127 | 1 | 0 | 1449 | 1449-127 | |
| 34994 | 1999 | 97118 | 1 | 14 | 5,3 | 37 | 0 | G | 17 | 41 | 11 | 49 | G | 90 | 1995 | 2085 | 295 | 56 | 0 | 0 | 12727 | 278 | 127 | 1 | 0 | 1449 | 1449-127 | |
| 34995 | 1999 | 97118 | 1 | 15 | 4,8 | 237 | 0 | G | 20 | 100 | 0 | 0 | G | 80 | 1930 | 2010 | 257 | 54 | 271 | 56 | 12831 | 278 | 127 | 1 | 0 | 1449 | 1449-127 | |
| 34996 | 1999 | 97118 | 1 | 16 | 1,6 | 0 | 0 | G | 20 | 0 | 0 | 0 | G | 80 | 1990 | 2070 | 106 | 66 | 16 | 10 | 12858 | 278 | 127 | 1 | 0 | 1449 | 1449-127 | |
| 34997 | 1999 | 97118 | 1 | 17 | 2,6 | 0 | 0 | G | 17 | 0 | 0 | 0 | G | 90 | 1990 | 2080 | 144 | 55 | 9 | 3 | 12863 | 278 | 127 | 1 | 0 | 1449 | 1449-127 | |
| 34998 | 1999 | 97118 | 1 | 18 | 3,1 | 136 | 0 | G | 20 | 100 | 0 | 0 | G | 80 | 1940 | 2020 | 168 | 54 | 168 | 54 | 12888 | 278 | 127 | 1 | 0 | 1449 | 1449-127 | |
| 34999 | 1999 | 97118 | 1 | 18 | 3,1 | 136 | 0 | G | 20 | 100 | 0 | 0 | G | 80 | 1940 | 2020 | 168 | 54 | 168 | 54 | 12888 | 278 | 127 | 1 | 0 | 1449 | 1449-127 | |
| 35000 | 1999 | 97118 | 1 | 19 | 1,1 | 0 | 0 | G | 20 | 0 | 0 | 0 | G | 80 | 1995 | 2075 | 73 | 66 | 0 | 0 | 12927 | 278 | 127 | 1 | 0 | 1449 | 1449-127 | |
| 35001 | 1999 | 97118 | 1 | 2 | 5,0 | 67 | 0 | G | 23 | 100 | 0 | 0 | G | 70 | 1955 | 2025 | 105 | 21 | 100 | 20 | 12356 | 278 | 127 | 1 | 0 | 1449 | 1449-127 | |
| 35002 | 1999 | 97118 | 1 | 20 | 9,2 | 32 | 0 | G | 17 | 0 | 0 | 100 | G | 90 | 1990 | 2080 | 511 | 56 | 33 | 4 | 12945 | 278 | 127 | 1 | 0 | 1449 | 1449-127 | |
| 35003 | 1999 | 97118 | 1 | 21 | 4,2 | 26 | 0 | G | 20 | 0 | 0 | 100 | L | 80 | 1950 | 2030 | 26 | 6 | 26 | 6 | 12637 | 278 | 127 | 1 | 0 | 1449 | 1449-127 | |
| 35004 | 1999 | 97118 | 1 | 22 | 4,8 | 21 | 0 | B | 11 | 0 | 0 | 100 | L | 110 | 1940 | 2050 | 21 | 4 | 21 | 4 | 12989 | 278 | 127 | 1 | 0 | 1449 | 1449-127 | |
| 35005 | 1999 | 97118 | 1 | 3 | 2,2 | 0 | 0 | G | 23 | 0 | 0 | 0 | L | 70 | | | 0 | 0 | 0 | 0 | 12383 | 278 | 127 | 1 | 0 | 1449 | 1449-127 | |
| 35006 | 1999 | 97118 | 1 | 4 | 1,3 | 54 | 0 | G | 23 | 100 | 0 | 0 | G | 70 | 1945 | 2015 | 66 | 51 | 68 | 52 | 12408 | 278 | 127 | 1 | 0 | 1449 | 1449-127 | |
| 35007 | 1999 | 97118 | 1 | 5 | 6,5 | 214 | 0 | G | 23 | 100 | 0 | 0 | G | 70 | 1950 | 2020 | 290 | 45 | 290 | 45 | 12453 | 278 | 127 | 1 | 0 | 1449 | 1449-127 | |
| 35008 | 1999 | 97118 | 1 | 6 | 6,5 | 126 | 0 | G | 20 | 100 | 0 | 0 | G | 80 | 1960 | 2040 | 295 | 45 | 239 | 37 | 12538 | 278 | 127 | 1 | 0 | 1449 | 1449-127 | |
| 35009 | 1999 | 97118 | 1 | 7 | 6,7 | 0 | 0 | G | 20 | 0 | 0 | 0 | G | 80 | 1985 | 2065 | 443 | 66 | 127 | 19 | 12491 | 278 | 127 | 1 | 0 | 1449 | 1449-127 | |
| 35010 | 1999 | 97118 | 1 | 8 | 1,2 | 0 | 0 | G | 20 | 0 | 0 | 0 | G | 80 | 1995 | 2075 | 79 | 66 | 0 | 0 | 12577 | 278 | 127 | 1 | 0 | 1449 | 1449-127 | |
| 35011 | 1999 | 97118 | 1 | 9 | 3,3 | 20 | 0 | G | 20 | 0 | 0 | 100 | G | 80 | 1990 | 2070 | 218 | 66 | 33 | 10 | 12595 | 278 | 127 | 1 | 0 | 1449 | 1449-127 | |
| 35012 | 1999 | 97119 | 1 | 1 | 41,3 | 182 | 0 | G | 20 | 0 | 0 | 100 | L | 80 | 1930 | 2010 | 182 | 4 | 182 | 4 | 13763 | 278 | 127 | 1 | 0 | 1449 | 1449-127 | |
| 35013 | 1999 | 97118 | 1 | 2 | 4,7 | 186 | 0 | G | 20 | 100 | 0 | 0 | G | 80 | 1950 | 2030 | 286 | 61 | 264 | 56 | 12887 | 278 | 127 | 1 | 0 | 1449 | 1449-127 | |

E6

fx

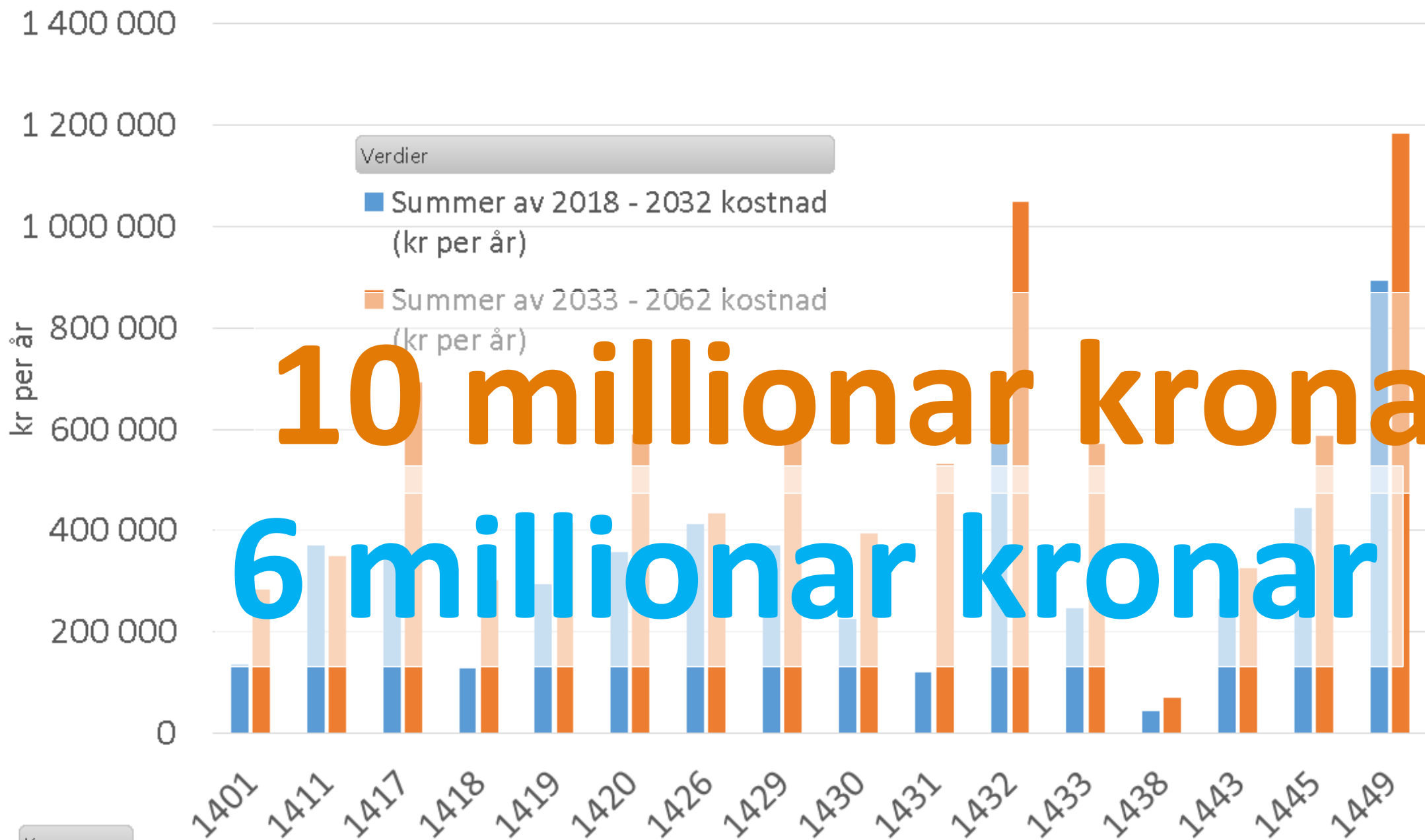
| | A | B | C | D | E | F | G | H | I | J | K | L | M | N | O |
|-----|-----------------|---------------|-------------|-------------|------|------|-------|-------|------|------|-------|------|-------|------|-------|
| 1 | | | | | | | | | | | | | | | |
| 2 | TRESLAG | | | | | | | | | | | | | | |
| 3 | | | kippekostna | 70 | | | | | | | | | | | |
| 4 | Summer av VOLHM | | | | | | | | | | | | | | |
| 5 | Vegnummer | Fram til 2017 | 2018 - 2032 | 2033 - 2062 | 2020 | 2025 | 2030 | 2035 | 2040 | 2045 | 2050 | 2055 | 2060 | 2065 | 2070 |
| 233 | 1445-74 | 1823 | 15000 | 44000 | 32 | 436 | 2751 | 6676 | 3031 | 343 | 5323 | 2575 | 919 | 1079 | 645 |
| 234 | 1445-84 | 437 | 1100 | 1100 | 139 | 101 | | 477 | | | | | | | |
| 235 | 1445-85 | 630 | 3100 | 1600 | | 540 | 120 | 224 | | 0 | 277 | | 203 | 109 | |
| 236 | 1449-1037 | 736 | 5600 | 24200 | 37 | | 1167 | 824 | 3068 | 750 | 1479 | 2842 | 1423 | 7171 | 7595 |
| 237 | 1449-109 | 651 | 20500 | 53800 | 209 | 663 | 3513 | 1371 | 3590 | 3594 | 3419 | 2392 | 8704 | 1257 | 2097 |
| 238 | 1449-112 | 328 | 3100 | 8100 | 68 | 271 | 318 | 848 | 343 | 337 | 663 | 714 | 556 | 507 | 109 |
| 239 | 1449-113 | 0 | 5300 | 4400 | 154 | | 974 | 158 | 115 | 161 | | | 1462 | 1679 | |
| 240 | 1449-115 | 204 | 8600 | 2800 | 266 | | 1586 | | 573 | | 120 | 61 | 449 | | 251 |
| 241 | 1449-127 | 16571 | 106800 | 140200 | 6103 | 6140 | 10648 | 11791 | 8102 | 9250 | 7698 | 6741 | 16498 | 8588 | 13453 |
| 242 | 1449-131 | 6066 | 8100 | 13600 | 228 | 708 | 806 | 350 | 1021 | 758 | 1663 | 1764 | 281 | 3415 | 577 |
| 243 | 1449-132 | 2415 | 26300 | 26700 | 3173 | 638 | 1827 | 1516 | | | 4033 | 628 | 5261 | 2567 | 107 |
| 244 | 1449-133 | 0 | 27300 | 2600 | 436 | 4344 | 1066 | | 364 | 606 | | | 142 | | |
| 245 | 1449-134 | 0 | 17600 | 15100 | | 3782 | | 424 | 998 | 1975 | 1826 | | 1234 | 237 | |
| 246 | 1449-135 | 0 | 3600 | 3600 | | | 772 | | | 227 | | | 1329 | 225 | |
| 247 | 1449-136 | 0 | 600 | 2400 | | 127 | | 355 | | 670 | | | | | |
| 248 | 1449-137 | 470 | 8900 | 9900 | 248 | 961 | 705 | 3527 | 274 | 248 | 209 | | | | |
| 249 | 1449-138 | 0 | 7500 | 0 | 22 | 737 | 842 | | | | | | | 404 | |
| 250 | 1449-139 | 0 | 1200 | 10400 | 251 | | | | | 213 | 4062 | | 189 | | |
| 251 | 1449-143 | 9068 | 28100 | 73900 | 568 | 3231 | 2215 | 844 | 2814 | 2419 | 13100 | 4321 | 8163 | 3930 | 8488 |
| 252 | 1449-148 | 835 | 22000 | 9600 | 1354 | 1984 | 1373 | 336 | 891 | 412 | | 344 | 2133 | 2685 | 1808 |
| 253 | 1449-149 | 670 | 11100 | 9700 | 539 | 930 | 918 | 869 | 802 | 694 | 55 | | 1721 | 4721 | 608 |
| 254 | 1449-150 | 3165 | 14000 | 13000 | 772 | 464 | 1040 | 1162 | 1370 | 020 | 047 | 700 | 250 | 1402 | 216 |

H2 : fx Lereim x fv. 212 - Tylden bru x rv. 5

| | A | B | C | D | E | F | G | H | I | J | K | L | M | N | O | P |
|----|------|-------|-------|---------------------------------|--------|---------------------------------|--------|---|--------|----------------|--------|--------------------|---|---|---|---|
| 1 | Komm | Vegnr | Vegnr | 2018 - 2032 kostnad (kr per år) | gering | 2033 - 2062 kostnad (kr per år) | gering | STREKNING | Lengde | BKL | BKL VI | Maks vogn-tog-leng | | | | |
| 2 | 1420 | 21 | | 197 600 | 1 | 269 400 | 1 | Lereim x fv. 212 - Tylden bru x rv. 5 | 1438 | Bk8 - 32 tonn | | 12,4 | | | | |
| 3 | 1417 | 49 | | 186 200 | 1 | 202 200 | 2 | Veg til Nedreli | 2447 | Bk8 - 32 tonn | | 12,4 | | | | |
| 4 | 1411 | 1011 | | 145 700 | 1 | 83 400 | 1 | | 16982 | Bk6 - 28 tonn | | 12,4 | | | | |
| 5 | 1445 | 1112 | | 132 600 | 1 | 179 000 | 1 | Vereide x E39 - Ryssfjæra | 4470 | Bk8 - 32 tonn | | 12,4 | | | | |
| 6 | 1419 | 1043 | | 124 700 | 1 | 144 800 | 2 | | 3311 | Bk10 - 50 tonn | | 12,4 | | | | |
| 7 | 1432 | 9 | | 115 700 | 2 | 283 700 | 1 | | 1634 | Bk10 - 50 tonn | | 12,4 | | | | |
| 8 | 1419 | 1064 | | 108 100 | 3 | 221 400 | 1 | Eggjavegen | 631 | Bk8 - 32 tonn | | 12,4 | | | | |
| 9 | 1449 | 1119 | | 106 800 | 1 | 140 200 | 1 | Skåden X Fv. 60 - Li | 3002 | Bk8 - 32 tonn | | 15 | | | | |
| 10 | 1426 | 2255 | | 98 200 | 1 | 25 600 | 7 | Ornes x fv. 331 - Kinsedal | 3755 | Bk10 - 50 tonn | | 12,4 | | | | |
| 11 | 1449 | 1081 | | 97 600 | 2 | 93 100 | 2 | Dalehaugen x kv. 82 - Oppheim | 2600 | Bk10 - 50 tonn | | 12,4 | | | | |
| 12 | 1432 | 1620 | | 97 000 | 3 | 89 400 | 2 | | 1108 | Bk10 - 50 tonn | | 12,4 | | | | |
| 13 | 1426 | 2204 | | 87 900 | 4 | 22 500 | 8 | Talle x fv. 55 - Skildheim | 4500 | Bk8 - 32 tonn | | 15 | | | | |
| 14 | 1420 | 221 | | 83 200 | 5 | 165 100 | 2 | Distad x fv. 152 - Jordal - Raudboti | 6609 | Bk8 - 32 tonn | | 12,4 | | | | |
| 15 | 1430 | 31 | | 82 600 | 1 | 177 300 | 1 | | 1710 | Bk8 - 32 tonn | | 12,4 | | | | |
| 16 | 1443 | 5040 | | 82 600 | 1 | 96 100 | 1 | Hundeide - Hundvik | 1829 | Bk10 - 50 tonn | | 12,4 | | | | |
| 17 | 1449 | 1132 | | 81 000 | 2 | 78 900 | 5 | | 2604 | Bk8 - 32 tonn | | 12,4 | | | | |
| 18 | 1445 | 1130 | 1077 | 77 100 | 3 | 101 100 | 2 | x kv. Haugeli - Lundestad - Solli - Alme - Skår | 2572 | Bk8 - 32 tonn | | 12,4 | | | | |
| 19 | 1418 | 6 | | 72 300 | 1 | 75 700 | 2 | | 6716 | Bk10 - 50 tonn | | 12,4 | | | | |
| 20 | 1430 | 21 | | 63 100 | 2 | 89 000 | 2 | X ved bru til Øvrebø - Årøy | 2388 | Bk6 - 28 tonn | | 12,4 | | | | |
| 21 | 1420 | 218 | | 61 000 | 3 | 125 900 | 3 | Stølen x rv. 5 - Skarestad - Supphellen | 6475 | Bk8 - 32 tonn | | 12,4 | | | | |
| 22 | 1417 | 56 | | 60 100 | 4 | 8 600 | 9 | Naustbøen x fv. 180 - Indre Borlaug | 780 | Bk8 - 32 tonn | | 12,4 | | | | |
| 23 | 1432 | 7 | | 59 400 | 5 | 81 400 | 5 | | 1698 | Bk10 - 50 tonn | | 12,4 | | | | |
| 24 | 1429 | 45 | | 57 800 | 1 | 34 100 | 7 | | 1979 | Bk8 - 32 tonn | | 12,4 | | | | |
| 25 | 1429 | 17 | | 55 100 | 2 | 55 700 | 5 | | 1521 | Bk8 - 32 tonn | | 12,4 | | | | |
| 26 | 1430 | 30 | | 52 600 | 3 | 61 500 | 3 | Nysna x fv. 391 - Berge x kv. 30 | 2262 | Bk8 - 32 tonn | | 12,4 | | | | |
| 27 | 1426 | 2409 | | 48 400 | 4 | 14 000 | 12 | Lambhauq x fv. 339 - Melheim x kv. 22 | 1398 | Bk8 - 32 tonn | | 15 | | | | |

Summer av 2018 - 2032 kostnad (kr per år)

Summer av 2033 - 2062 kostnad (kr per år)



10 millionar kronor

6 millionar kronor

Komm ▾